

## TURBINE-S1000D DISASSEMBLY

### Table of contents

Page

Preliminary requirements .....	1
Procedure .....	2
Requirements after job completion .....	14

### List of figures

1	Reductor module .....	3
2	Turbine Systems .....	5
3	ICN-TURBINE-A-000000-0-00000-00014-A-01-1 .....	7
4	ICN-TURBINE-A-000000-0-00000-00013-A-01-1 .....	9
5	Combustion chamber removal .....	11
6	Compressor rotor removal .....	13

### List of tables

1	Required conditions .....	1
2	Support equipment .....	2
3	Consumables, materials and expendables .....	2
4	Spares .....	2
5	Required conditions .....	14

### *Preliminary requirements*

### Required conditions

*Table 1 Required conditions*

Action/Condition	Data module/Technical publication
None	

## Support equipment

*Table 2 Support equipment*

Name	Identification/Reference	Quantity	Remarks
PORTAL CRANE	Part No 9850448-02	1 EA	
STAPEL	Part No S1259-001	1 EA	

## Consumables, materials and expendables

*Table 3 Consumables, materials and expendables*

Name	Identification/Reference	Quantity	Remarks
None			

## Spares

*Table 4 Spares*

Name	Identification/Reference	Quantity	Remarks
None			

## Safety conditions

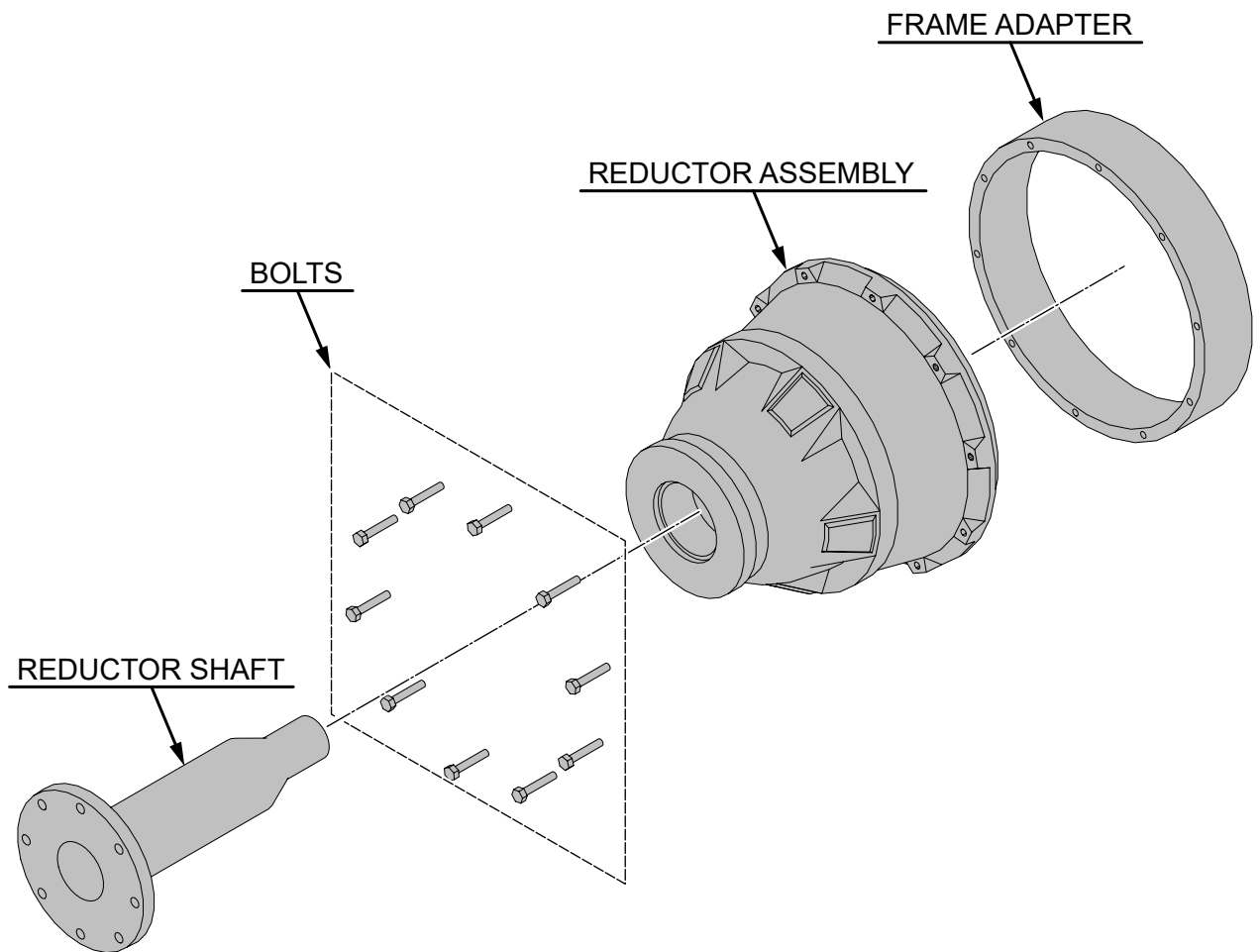
None

## Procedure

- 1 REDUCTOR COVER REMOVAL
  - 1.1 REMOVE UPPER COVER RC-001
  - 1.2 REMOVE LOWER COVER RC-002
  - 1.3 REMOVE 10 BOLTS (KOR-10)
  - 1.4 DETACH REDUCTOR MODULE M-001

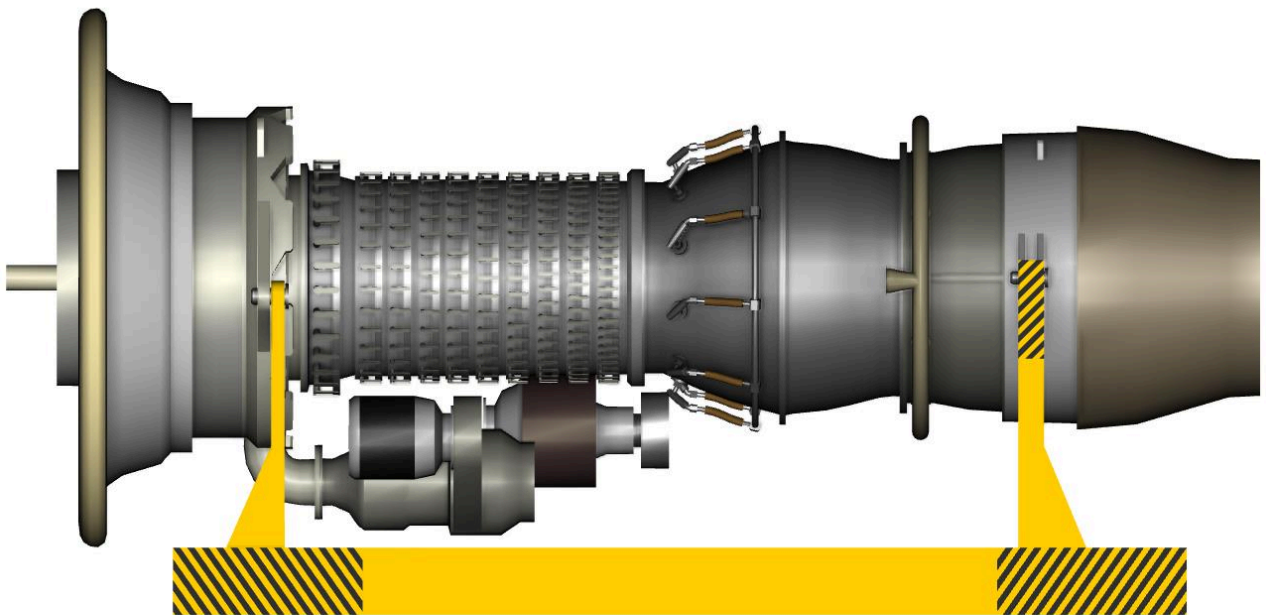
Applicable to:  
All

**TURBINE-A-000-00-00-00AA-520A-A**



ICN-TURBINE-A-000000-0-00000-00021-A-01-1  
*Fig 1 Reductor module*





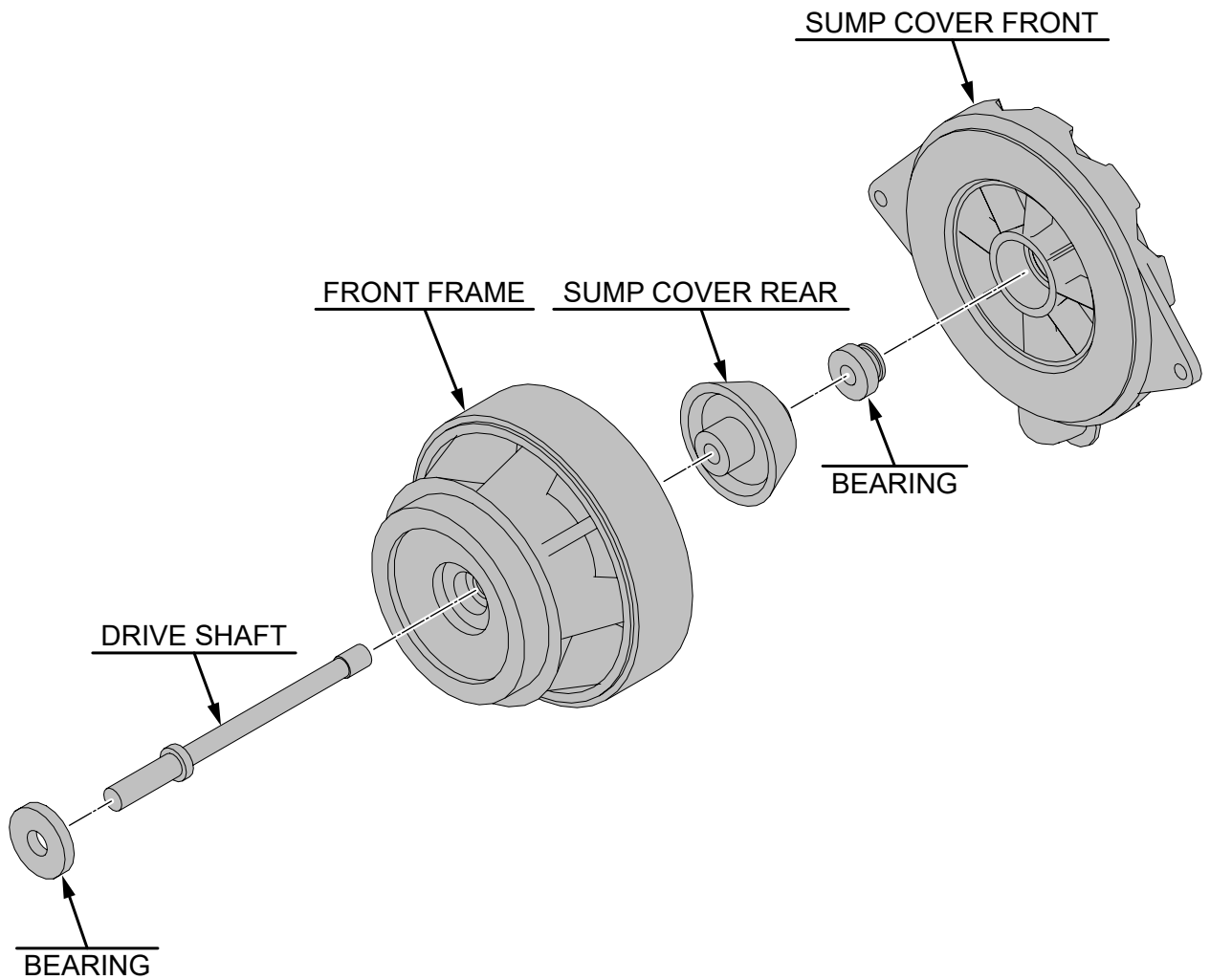
ICN-TURBINE-A-000000-0-00000-00022-A-01-1  
*Fig 2 Turbine Systems*

---

Applicable to:  
All

**TURBINE-A-000-00-00-00AA-520A-A**

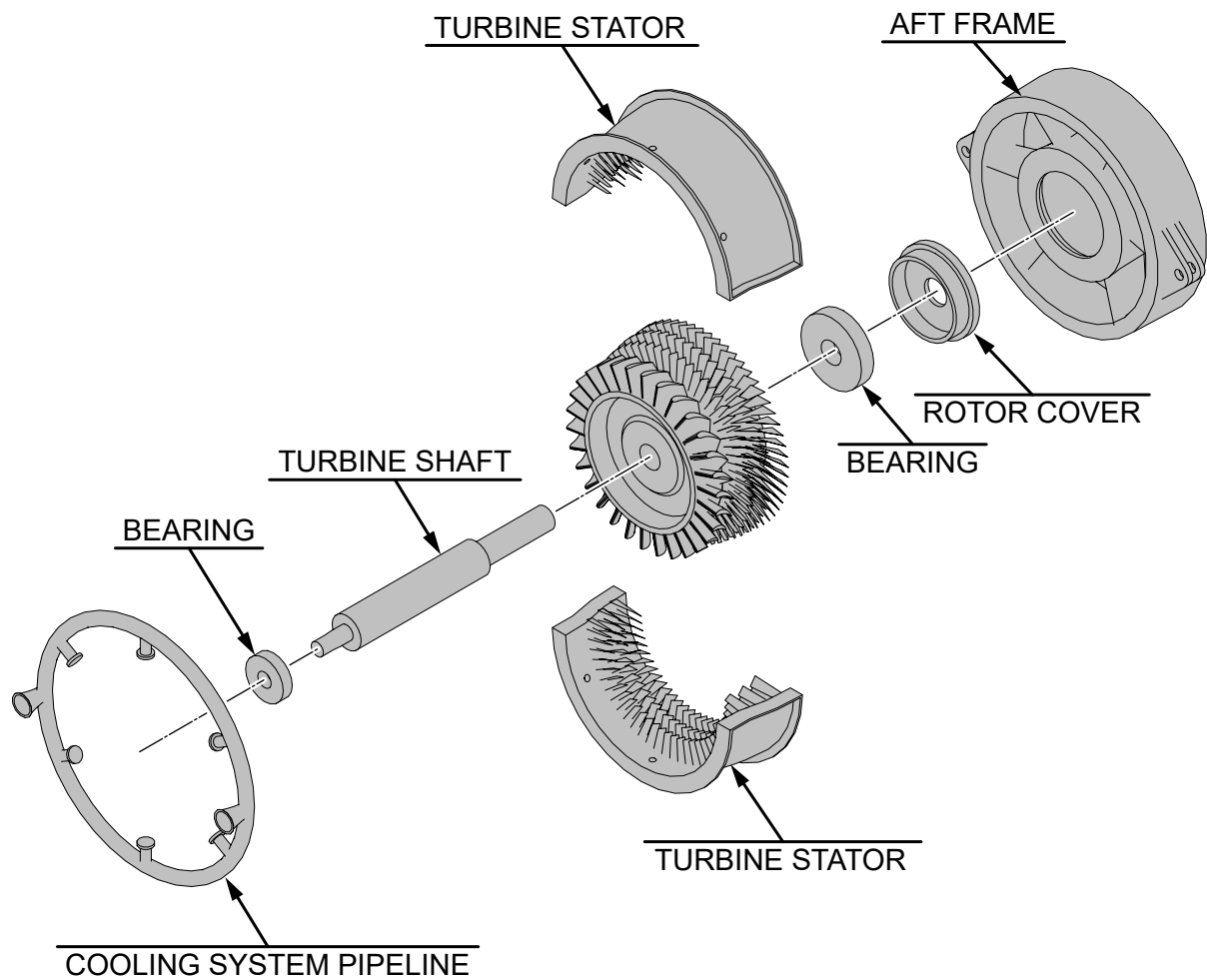
- 
- 2.1 DETACH STARTER M-007
  - 2.2 DISASSEMBLE FUEL PIPELINE M-004-004 AND FUEL NOZZELS M-004-005
  - 2.3 DISASSEMBLE COOLING SYSTEM PIPELINE T-001
  - 3 INLET/OUTLET NOZZLES DISASSEMBLY
    - 3.1 REMOVE FORWARD PART OF INLET NOZZLE IN-001
    - 3.2 REMOVE AFT PART OF INLET NOZZLE IN-002
    - 3.3 REMOVE OUTLET NOZZLE MODULE M-006
  - 4 FORWARD SUMP DISASSEMBLY



ICN-TURBINE-A-000000-0-00000-00014-A-01-1  
*Fig 3 ICN-TURBINE-A-000000-0-00000-00014-A-01-1*

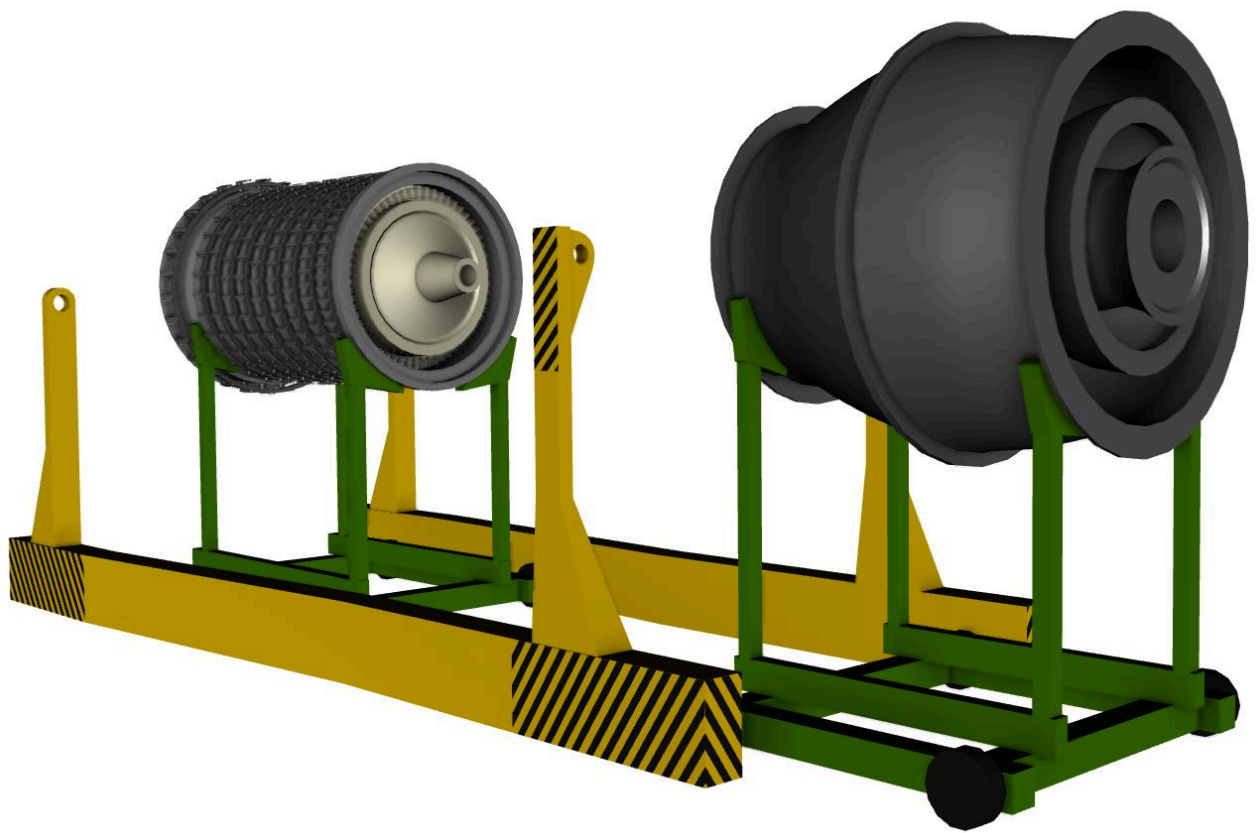
- 
- 4.1 PLACE WAY UNDER COMPRESSOR
  - 4.2 PLACE WAY UNDER COMBUSTION CHAMBER
  - 4.3 DETACH FORWARD SUMP M-002
  - 5 TURBINE MODULE DISASSEMBLY
  - 5.1 PLACE WAY UNDER TURBINE
  - 5.2 DETACH AFT FRAME M-005-003
  - 5.3 DETACH LOW PRESSURE TURBINE (LPT)





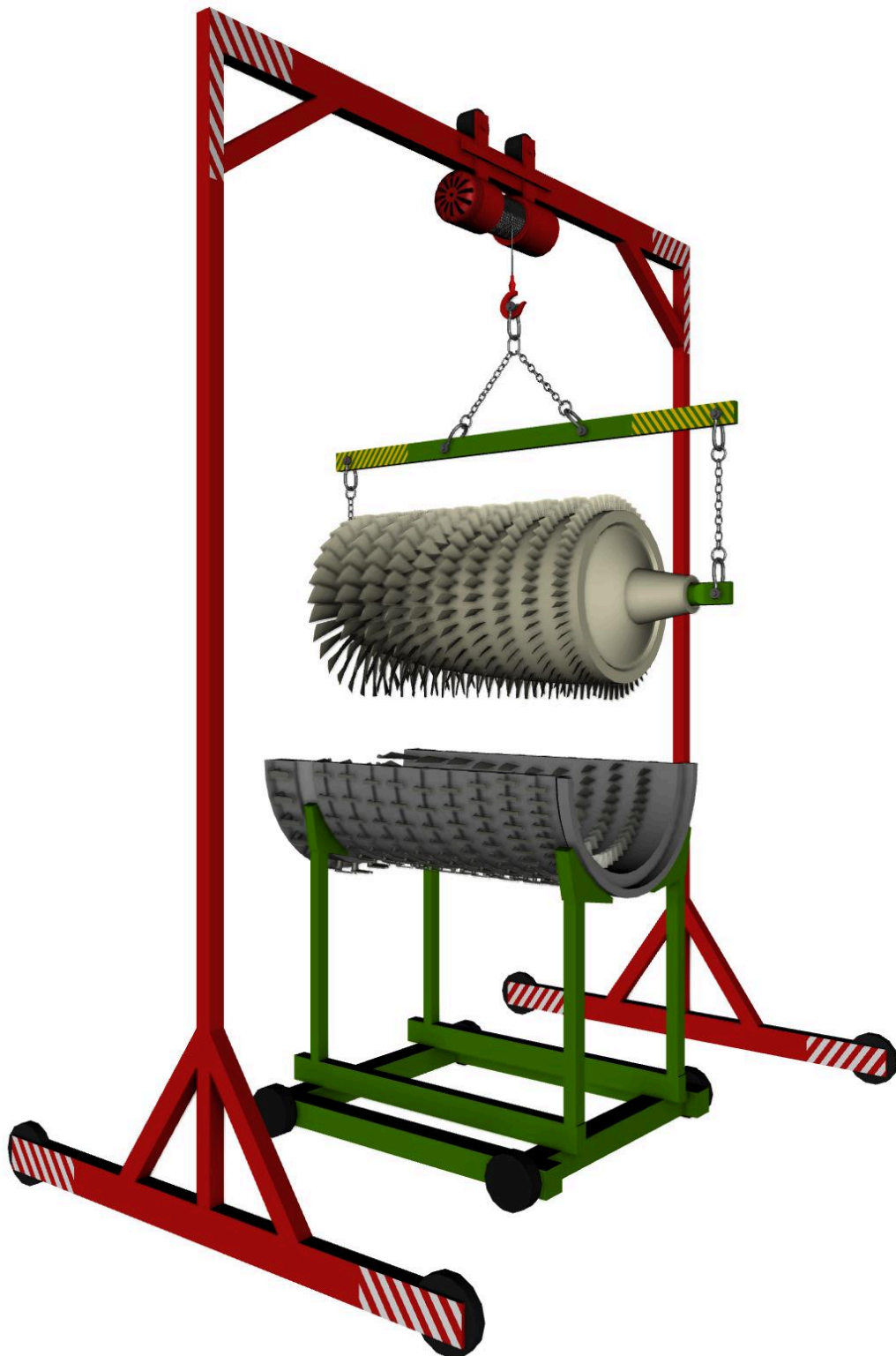
ICN-TURBINE-A-000000-0-00000-00013-A-01-1  
Fig 4 ICN-TURBINE-A-000000-0-00000-00013-A-01-1

- 
- 5.4 REMOVE LPT UPPER CASE
  - 5.5 REMOVE LPT ROTOR M-005-001
  - 6 COMBUSTION CHAMBER DISASSEMBLY



ICN-TURBINE-A-000000-0-00000-00023-A-01-1  
*Fig 5 Combustion chamber removal*

- 
- 6.1 DETACH COMBUSTION CHAMBER M-004
  - 7 COMPRESSOR MODULE DISASSEMBLY
    - 7.1 DISASSEMBLE STATOR BLADES CONTROL SYSTEM
    - 7.2 REMOVE COMPRESSOR UPPER CASE M-003-002 WITH BLADES
    - 7.3 REMOVE COMPRESSOR ROTOR M-003-003



ICN-TURBINE-A-000000-0-00000-00024-A-01-1

*Fig 6 Compressor rotor removal*

Applicable to:  
All

**TURBINE-A-000-00-00-00AA-520A-A**

---

***Requirements after job completion*****Required conditions***Table 5 Required conditions*

Action/Condition	Data module/Technical publication
None	